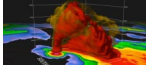


# GRLevelX

Written by Ryan Lehms

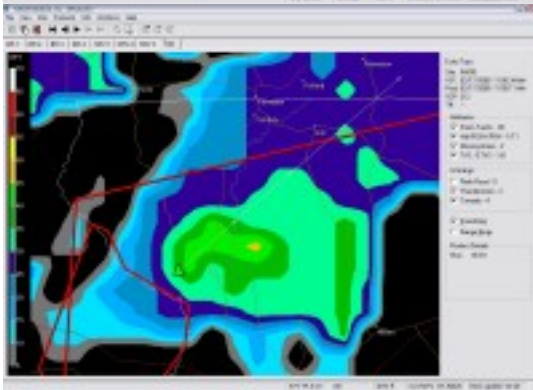
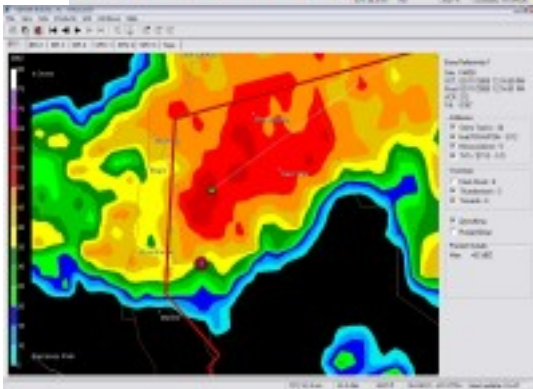
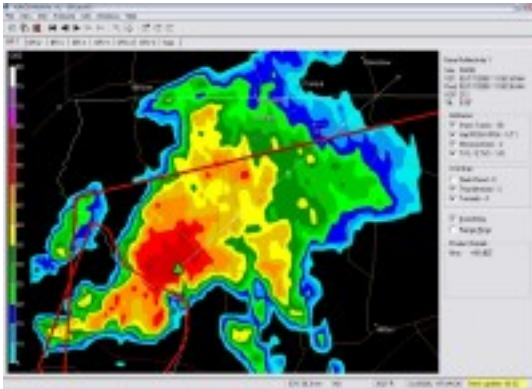
Saturday, 01 November 2008 06:32 - Last Updated Thursday, 03 May 2012 07:07

---



Gibson Ridge Software, LLC (GRS) was created in March 2005 and produces viewers for weather radar data. GRS applications include GRLevel2 for viewing Level II radar data and GRLevel3 for viewing Level III data. Both viewers feature high speed, high quality radar displays with an intuitive user interface. All GRS applications are written in multithreaded C++ using the base Windows APIs for speed and efficiency.

Gibson Ridge Software's Owner is Michael Scott Gibson, a software design engineer with two decades of experience writing PC applications and operating system software. His primary specialty is graphics and font technology, from the API down to the driver level, and is the inventor or co-inventor in three patents related to that work.



## GRLevelX

Written by Ryan Lehms

Saturday, 01 November 2008 06:32 - Last Updated Thursday, 03 May 2012 07:07

---

This screen shot shows a Billing and Access report for the Storm Base Velocity Multiple Alert Period Data

## GRLevelX Products:

---

### GRLevel2

GRLevel2 is a Windows viewer for live and archived NEXRAD Level II data. Base reflectivity, base velocity

### GRLevel3

GRLevel3 is a Windows viewer for live NEXRAD Level III data from the NWS Radar Product Central Co

GRLevel3 uses patent pending direct radial rendering techniques to display smoothed radial radar data

### GRLevel2 Analyst Edition

GRLevel2 Analyst Edition is an advanced Nexrad Level II analysis application. It features a high quality

---

### Download:

<http://www.grlevelx.com>

### Add Ons & Extras:

<http://www.grlevelxstuff.com>